

Demographics

Demographics for 9204 Guadalupe Trl Nw, Albuquerque, NM 87114-1718

2009-2013 American Community Survey 5-Year Estimates
for Bernalillo County, NM Tract 36 BlockGroup 5

Population Profile Total Population: 1025

Age	0-14	15-21	22-34	35-44	45-54	55-64	65+
Male	5.76%	1.27%	7.02%	5.95%	6.83%	11.32%	11.71%
Female	7.51%	1.27%	8.39%	5.46%	7.80%	8.59%	11.12%

Socio-Economic Profile Median Household Income: \$44,531.00

Household Income	Profession	Education	Cars Owned
\$0-10k	36	Management/ Professional	138
\$10-25k	49	Service	102
\$25-35k	53	Sales/Admin	53
\$35-50k	64	Trades	23
\$50-75k	45	Production/ Transportation	61
\$75-100k	86		
\$100k+	38		

Housing Profile

Occupancy	Bedrooms	Year	Move-In	Built
Owner	317	No Bedrooms	0	2010+
Renter	54	1 Bedrooms	15	2000-09
SFR Det	385	2 Bedrooms	66	1990-99
SFR Att	0	3 Bedrooms	275	1980-89
MF 2-4	13	4 Bedrooms	63	1970-79
MF 5+	0	5+ Bedrooms	0	Before 1970
%	Mortgage	Mortgage Costs	Gross Rent	
0-24%	60	\$0 - 499	0	\$0 - 299
25-29%	34	\$500 - 799	0	\$300 - 549
30-34%	12	\$800 - 1499	80	\$550 - 749
35%+	47	\$1500+	73	\$750+
		Average	1,475.00	Average

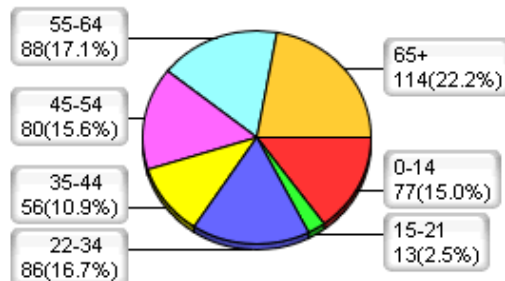
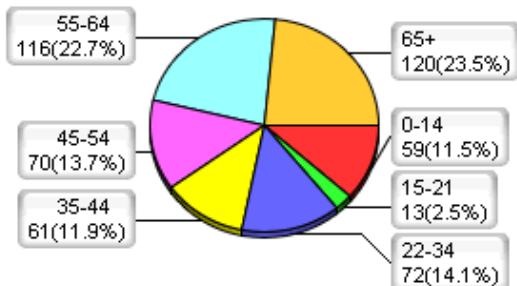
Cost as of % of income for year

Population Profile Pie Charts

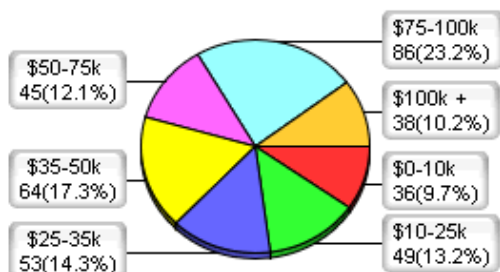
Population Profile for Bernalillo County, NM Tract 36 BlockGroup 5 (based on the 2010 census)

Male Population Total: 511

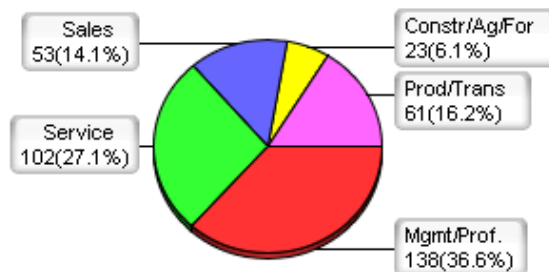
Female Population Total: 514



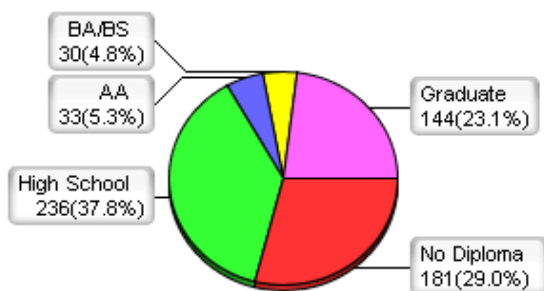
Household Income



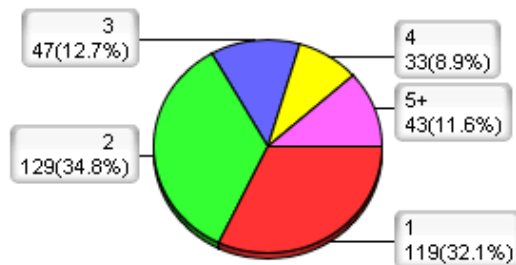
Profession



Education



Cars Owned

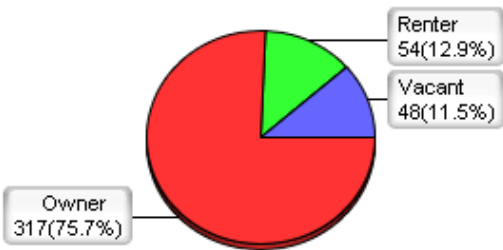




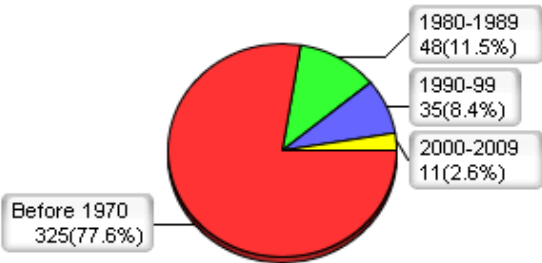
Housing Profile Pie Charts

Housing Profile for Bernalillo County, NM Tract 36 BlockGroup 5 (based on the 2010 census)

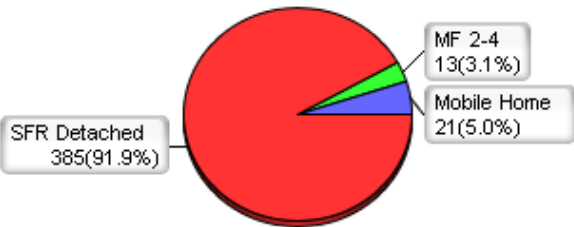
Occupancy - Total Units: 419



Year Built - Total Units: 419



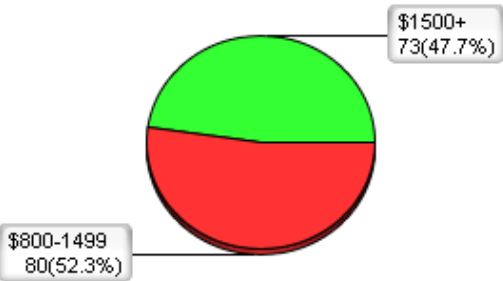
Unit Type - Total Units: 419



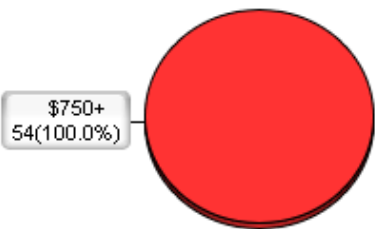
Number of Bedrooms - Total Units: 419



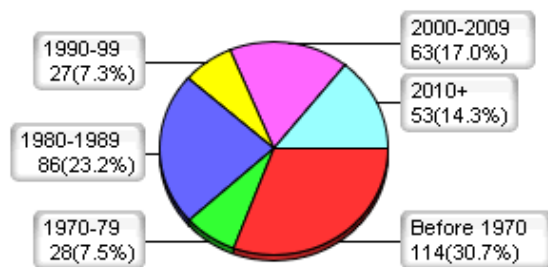
Monthly Mortgage Cost - average: \$1,475.00



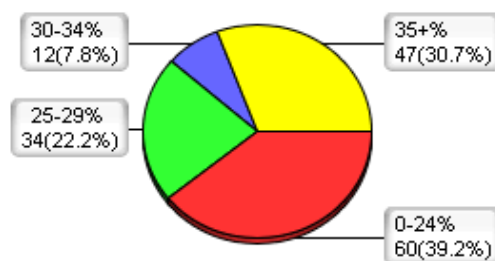
Monthly Rent Cost - average: \$0.00



Year Moved In - Total Units: 419



Mortgage As a Percent of Income



COPYRIGHT © 2015 COURTHOUSE RETRIEVAL SYSTEM. ALL RIGHTS RESERVED.
Information Deemed Reliable But Not Guaranteed.
Contact Us at (800) 374-7488 ext 3 for Help.